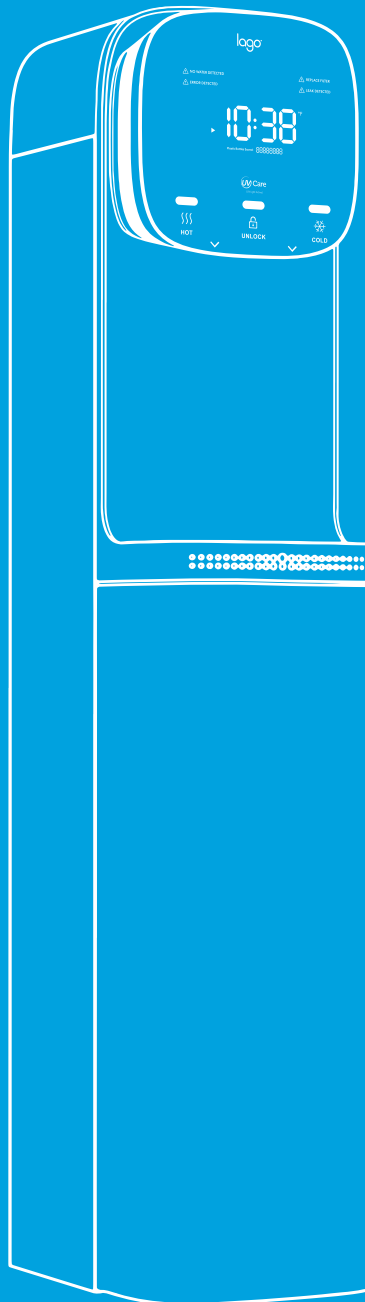


lago®



Point-of-Use Water Station
User's Manual
Model: CLP5KUVRO4X

Table of Contents

Safety Information	3
Intended Use	3
Package Contents	4
Parts Not Included	4
Optional Equipment	4
Product Features	5
Display Panel Description	5
Specifications	6
Operational and Technical Specifications	6
Installation	7
Determine Installation Location	7
Materials Needed	7
Connect to the Cold Water Supply	7
Connect to Drain Outlet	8
Flush the Filters	9
Install the Filters and Connect Tubing	10
Connect External Water Storage Tank (Optional)	10
Operation	11
Programming Settings	11
Dispense Hot or Cold Water Using Touchless Dispensing	11
Dispense Hot or Cold Water Using Touch Dispensing	11
Care and Maintenance	12
Regular Maintenance	12
Secure Dispenser	13
Filter Replacement Schedule	13
Replace Filters	13
Filter Specifications	14
Draining Internal Water Tanks	14
Troubleshooting	15
Error Codes	16
Warranty	17

Safety Information

WARNING: To reduce risk of injury and property damage, you must read this entire guide before assembling, installing, and operating this dispenser.

- Use a properly grounded socket **ONLY**. Do **NOT** attempt to alter 3-prong plug in any way. If a GFCI socket is not available, it is your responsibility to have one installed by a qualified electrician. If power cord is damaged, it must be replaced immediately by a qualified professional. Do **NOT** attempt to replace it by yourself. Do **NOT** yank power cord. Do **NOT** use extension cord.
- Ensure circuit conforms to voltage and power markings to prevent circuit from being overloaded.
- Dispose of first quart of water dispensed and first quart dispensed after a long period of non-use.
- Do **NOT** touch spout when dispensing hot water to avoid scalding.
- Locate dispenser at least 6 in. (15 cm) from surrounding walls to prevent overheating, which may damage components and cause a fire.
- This dispenser is for use with water **ONLY**.
- Use dispenser only for purposes for which it was intended. Any other use will void warranty.
- Never allow children to dispense hot water without proper and direct supervision. Unplug dispenser to prevent unsupervised use by children.
- Dispenser is for indoor use only. It must be placed in a cool, dry, ventilated environment away from direct sunlight and any risk of splashed water. Do **NOT** store near flammable or explosive items.
- Dispenser should be disposed of in accordance with local laws and regulations.
- Recommended working ambient temperature is 41°-90°F (5°-32°C).
- **NEVER** immerse dispenser in water to avoid electrical shock.
- Do **NOT** spray water directly onto the dispenser for purposes of cleaning. Always clean dispenser and tanks with a clean damp cloth. **NEVER** use chemical detergents for cleaning.
- Hot water dispenses at a very high temperature. Do **NOT** dispense into a plastic container or any other container not designed to hold very hot water.
- If not using drip tray drain hose, remove drip tray by hand and empty water, then reinstall.

CAUTION: Heating element only turns on when hot water tank is full to prevent dry burning.

CAUTION: ALWAYS disconnect from power before cleaning or servicing to avoid electrical shocks.

WARNING: Do **NOT** attempt to access locked back of dispenser. This should be done by an authorized technician only.

WARNING: UV light source. Disconnect the electrical supply to the UV radiation **BEFORE** servicing.

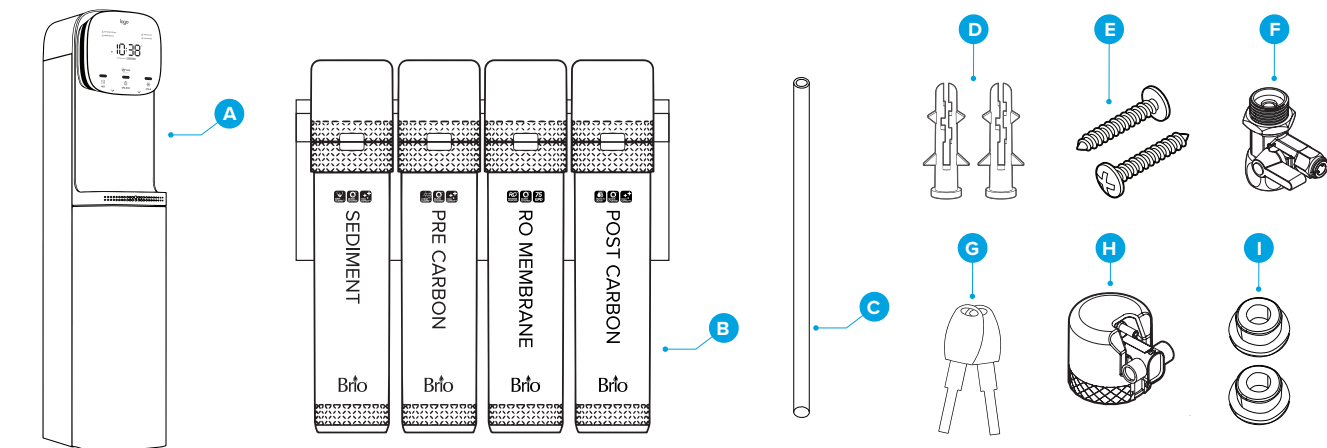
- UV-LED lamp must be repaired by manufacturer only.
- UV-LED lamp model no. CFL-CM02, rated DC12V/24V, ≥120mW.
- Disposal of the UV-LED lamp must be done in accordance with local laws and regulations

WARNING: Designed for use with 115V AC power only. DO **NOT** use with 220V outlet.

Intended Use

This dispenser is not intended for use by persons (including children) with reduced physical, sensory or mental capabilities, or lack of experience and knowledge, unless they have been given supervision or instruction concerning use of the appliance by a person responsible for their safety.

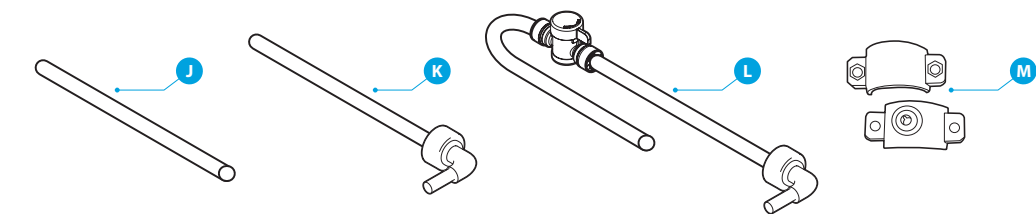
Package Contents



Part	Description
A	Standup dispenser
B	Filters x4
C	Silicone drip tray hose
D	Anchors x2
E	Screws x2

Part	Description
F	Feedwater adapter
G	Access keys x2
H	Filter flushing housing
I	Spare gasket x2

Parts Not Included*



Part	Description
J	1/4" Filter flushing tube
K	1/4" RO wastewater tube

Part	Description
L	1/4" Shut-off valve tube
M	Drain saddle with 1/4" quick connect

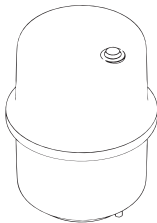
*Installation components must be purchased separately. Available at briowater.com.

Optional Equipment

External 3-Gallon Water Storage Tank

An optional external 3-gallon water storage tank is available for purchase. It is used to mitigate dispenser-tank water shortages caused by high use, low water pressure, or water outages. Contact your Lago dealer for details.

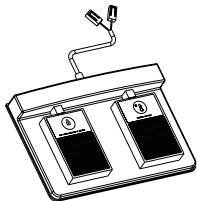
Model No. ACWC7247



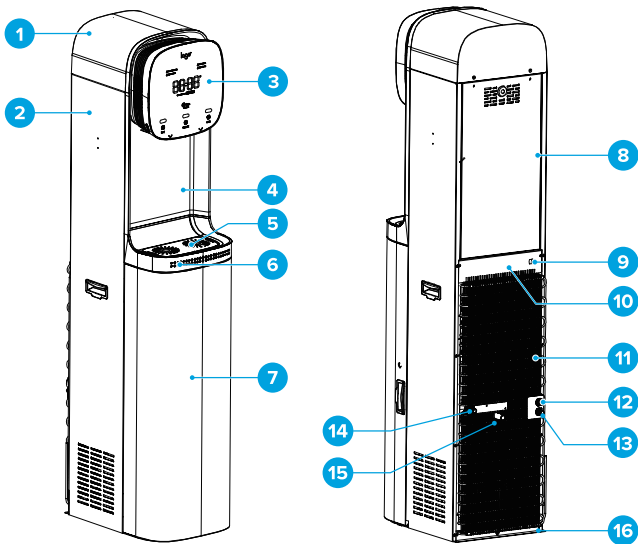
Foot Pedal Accessory with Safety Feature

An optional foot pedal is available for purchase. Attaching to the bottom of the dispenser, it allows for convenient hands-free dispensing of both hot and cold water. Contact your Lago dealer for details.

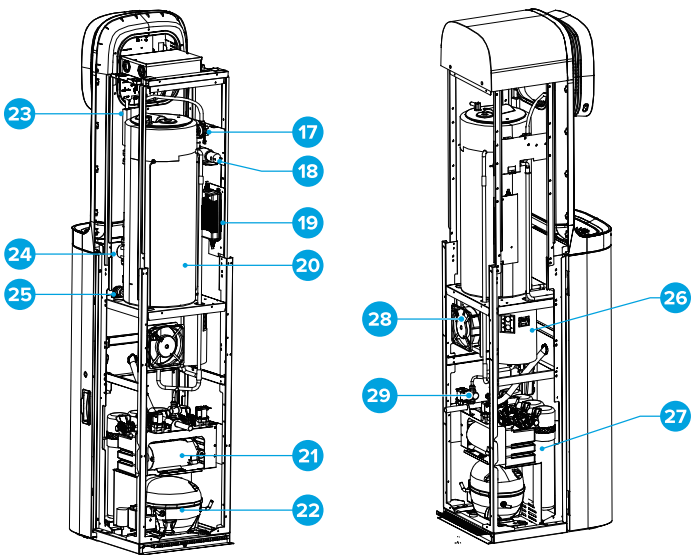
Model No. FPA5K9503



Product Features



Part	Description
1	Top Cover
2	Left Side Panel
3	Touch Panel
4	Front Panel
5	Drip Tray Grid
6	Drip Tray Frame
7	Filtration Compartment Door
8	Upper Back Panel
9	Power Cord Port
10	Rear Bracket
11	Condenser
12	Water Inlet
13	RO Wastewater Outlet
14	Storage Tank Port
15	Hot/Cold Water Tank & Drip Tray Drain Outlet

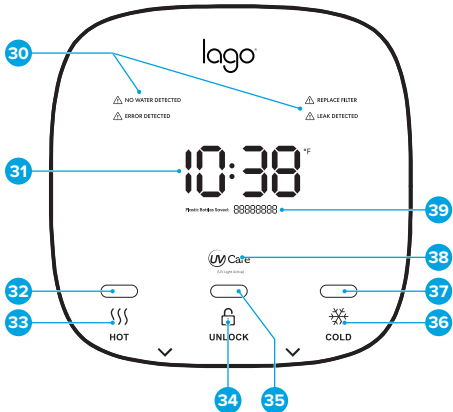


Part	Description
16	Lower Back Panel
17	Hot Water Flow Meter
18	Hot Water Flow Pump
19	Adapter
20	Cold Water Tank
21	Booster Pump
22	Compressor
23	UV Lamp
24	Cold Water Flow Water
25	Cold Water Pump
26	Hot Water Tank
27	Filtration System
28	Fan
29	Hot/Cold Water Tank Drain Valve

Display Panel Description

No.	Description
30	Alert Icons
31	Time Display
32	Touchless Hot Water Sensor
33	Touch Hot Water Button
34	Touch Unlock Button
35	Touchless Unlock Sensor
36	Touch Cold Water Button
37	Touchless Cold Water Sensor
38	Self-Cleaning UV Care Icon
39	Plastic Bottles Saved Counter*

*Counts per 16.9 oz. bottle.



Specifications

Operational and Technical Specifications

You must use the dispenser with the following operational parameters to ensure safe, optimal performance.

Model No.	CLP5KUVRO4X
Net Weight	117 lb. (53 kg)
Dimensions (WxHxD)	12.6 x 61 x 18.5 in. (32 x 155 x 47 cm)
UV Lamp Service Life	3 years or 2,000 hours*
Shell Material	Metal and ABS
Cold Tank Material	Stainless steel
Hot Tank Volume	1.7L
Cold Tank Volume	9.5L
Installation Method	Stand type
Water Temperature	Hot: 86°-203°F (30°-95°C); Cold: 41°-50°F (5°-10°C)
Water Flow Rate	Hot: 1 L/min; Cold: 3.78 L/min
Hot Water Capacity	>3 L/hour, 185° - 203° F (85° - 95° C)
Cold Water Capacity	>10 L/hour, 41° - 50° F (5° - 10° C)
Heating Power	500W
Cooling Power	235W
Total Wattage Rating	825W
Voltage	115V~ / 60Hz
Inlet Water Pressure	14.5-58 psi (0.1-0.4 MPa)
Installation Location	Indoor protected area
Water Source	Municipal system

*Service life tested by manufacturer.

Installation

Determine Installation Location

- A. Locate the dispenser upright on a hard, level surface that is out of direct sunlight and near a grounded wall outlet.
- B. Position the dispenser at least 6 in. (15 cm) from surrounding walls to permit free airflow between the wall and the water dispenser.

IMPORTANT: Ensure dispenser stands upright for 24 hours BEFORE plugging in to allow oil to settle back into compressor. Failure to do so may damage the compressor and void warranty.

Materials Needed

- Adjustable wrench
- Towel

Connect to the Cold Water Supply

CAUTION: DO NOT CONNECT THIS WATER LINE TO A HOT WATER SUPPLY LINE. The water supply to the unit MUST be from the COLD WATER LINE. Using HOT WATER will severely damage your filters.

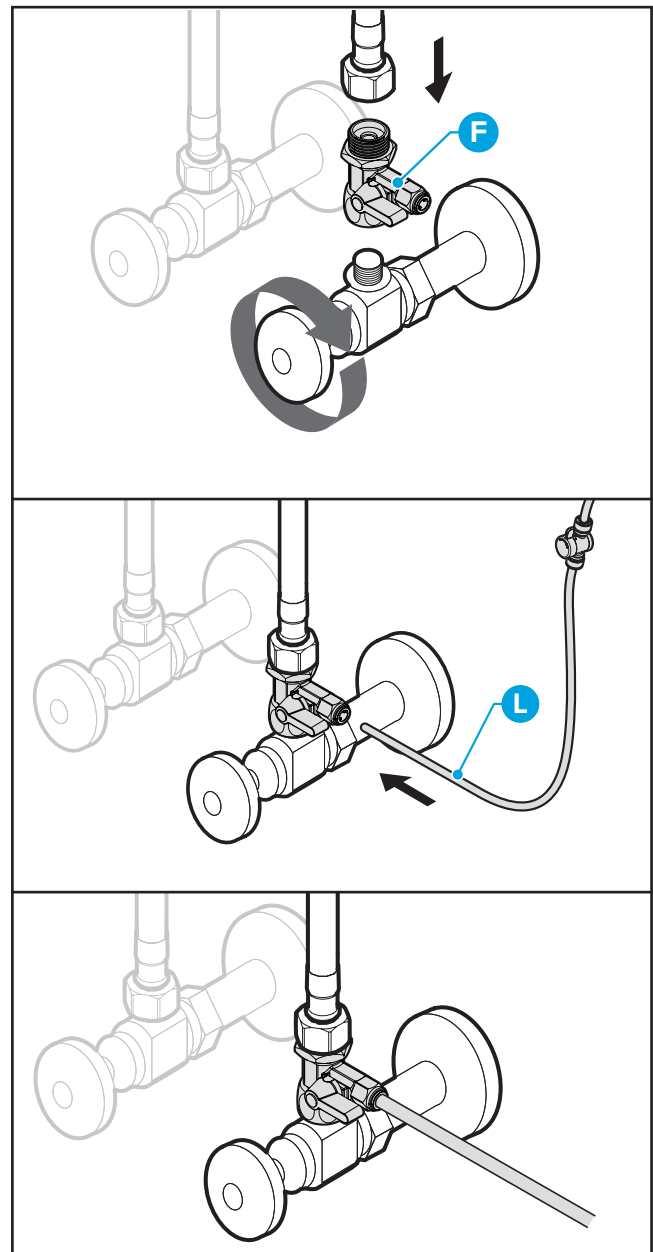
NOTE: Connection components and installation materials sold separately.

IMPORTANT: If using plumber's tape for the installation, DO NOT use it on the included feedwater adapter, as it has a built-in gasket that creates a proper seal without tape.

- A. Turn off the cold water supply, then disconnect the cold water pipe from the cold water supply line.
- B. Connect the feedwater adapter (F) to the cold water supply line.
- C. Connect the cold water pipe to the top of the feedwater adapter.

NOTE: An extra adapter nut is included on top of the feed water adapter to attach to a 3/8 in. or 1/2 in. feed plumbing line.

- D. Insert the shut-off valve with tube (L) straight into the quick connector piece of the feedwater adapter.
- E. Gently tug on the tube to ensure a secure connection with the feedwater adapter.



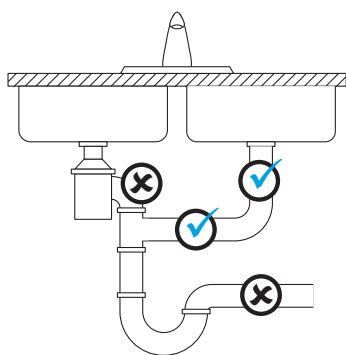
Connect to Drain Outlet

Gathering the following supplies:

- Variable speed drill with 1/4" bit
- Screwdriver
- Goggles or protective glasses
- Towel

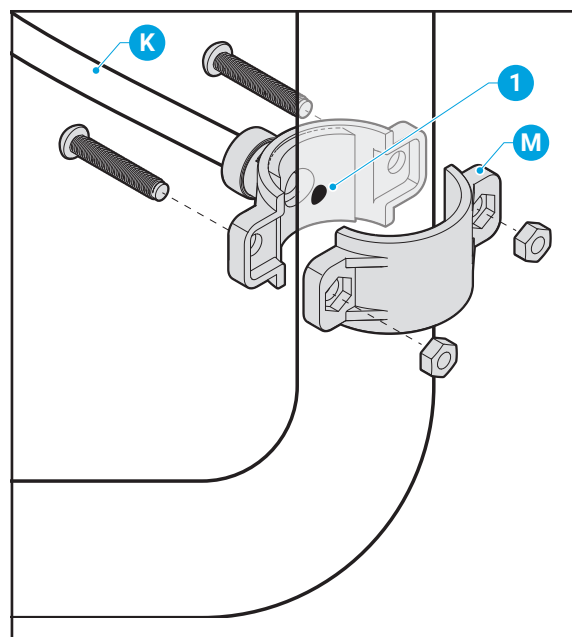
The drain saddle connects the RO wastewater tube from the dispenser to your drain pipe. Be sure to purchase a drain saddle with an OD measurement that can accommodate the designated drain pipe.

- ✓ Always install the drain saddle before the P-trap and on a straight vertical or horizontal section of the pipe.
- ✗ To avoid clogging the drain line with debris, do not install the drain saddle after the drain pipe meets a garbage disposal or dishwasher drain.



To make the wastewater drain connection:

- Determine location for drain saddle. To guide drilling, make a mark on the pipe for opening (1).
- Using adjustable drill with 1/4" drill bit, drill hole at mark. Drill hole in one side of pipe ONLY.
- Remove the backing from the foam gasket. Align the adhesive side of it over the hole on the inside of the drain saddle. Press in place, ensuring a clean opening.
- Position both halves of the drain saddle (M) around the drain pipe, aligning the opening in the drain saddle directly over the drilled hole in the drain pipe. Insert the drill bit through both holes to ensure proper alignment.
- Secure the drain saddle to the drain pipe using the provided nuts and bolts. DO NOT overtighten.
- Insert the RO wastewater tube (K) into the quick connect of the drain saddle. Insert to the black line marked on the tube. Gently tug on the tube to ensure a secure connection.



Flush the Filters

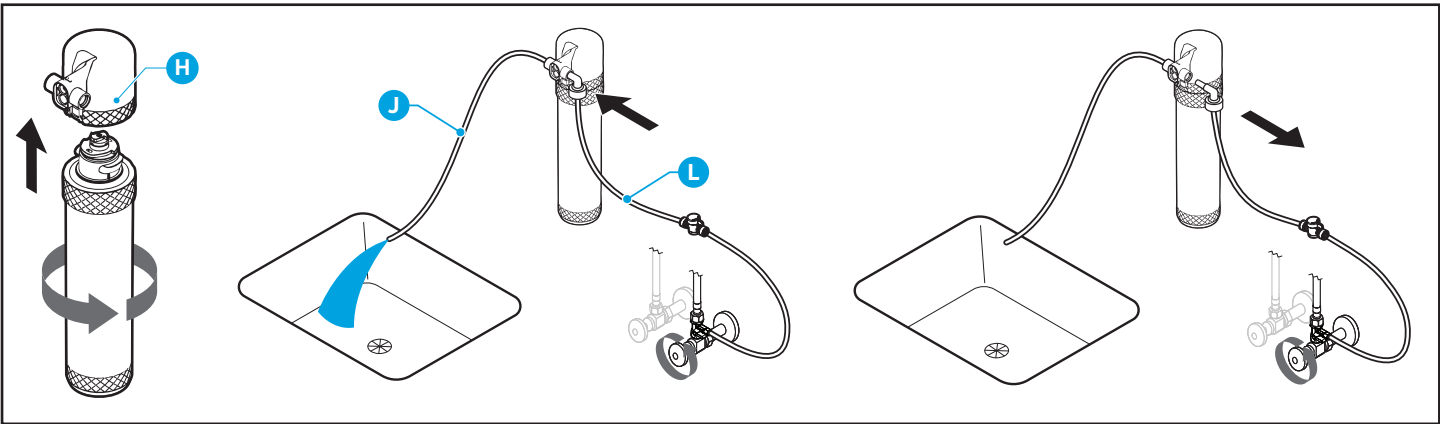
Follow this procedure each time you replace your filters.

IMPORTANT: Ensure water supply is off before you begin.

IMPORTANT: Flush **ONLY** the sediment, pre carbon, and post carbon filters. The reverse osmosis (RO) filter should not be flushed.

- A. Twist filter into filter flushing housing (H) until it locks into place.
- B. Connect the elbow tip of the shut-off valve tube (L) to the right side of the filter housing.
- C. Connect the filter flushing tube (J) to the left side of the filter housing and lay the open end of the filter flushing tube over a sink or receptacle to collect water.
- D. Turn on cold water supply and follow instructions in table below to flush filters.

IMPORTANT: After each filter is flushed, be sure to shut off water supply before disconnecting tubes to flush the next filter.

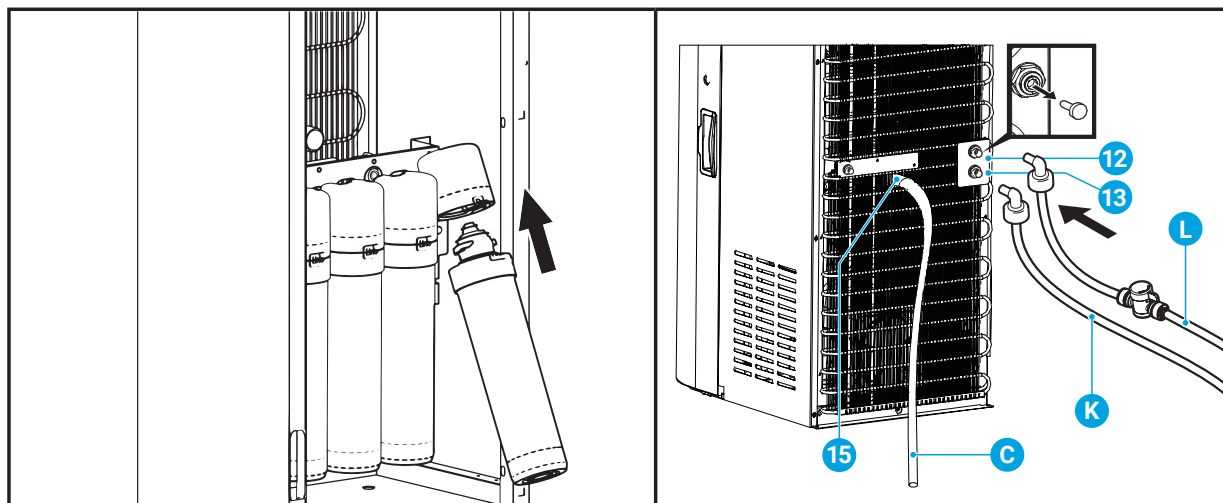


Stage 1: Sediment Filter	Stage 2: Pre Carbon Filter	Stage 3: RO Membrane	Stage 4: Post Carbon Filter
At first, water may appear cloudy.	At first, water may contain black debris.	Filter does not require flushing.	At first, water may contain black debris.
Flush filter for an additional 4 minutes <u>after</u> water runs clear.	Flush filter for up to 6 minutes or until water runs clear.		Flush filter for up to 4 minutes or until water runs clear.

Install the Filters and Connect Tubing

- A. After flushing the filters, open the cabinet door of the dispenser. One by one, insert filters into their respective housings and twist to the right until filter locks securely in place. Filters are installed, from left to right: sediment, pre carbon, RO, post carbon.
- B. Remove safety plug from water inlet (12) by first pushing in collar on inlet to release plug before pulling plug out. Do NOT attempt to pull plug out without first releasing it. Once plug has been removed, insert shut-off valve tube (L).
- C. Follow the same procedure as above when removing safety plug from RO wastewater outlet (13), then insert free end of 1/4" RO wastewater tube (K) into water outlet.
- D. If you wish to automatically drain drip tray instead of manually emptying it, first lift drip tray grid off drip tray, then remove drip tray from dispenser. Reach in and remove safety plug at the base of the drain, then reinstall the drip tray grid ONLY. Securely connect silicone drip tray hose (C) to the drip tray outlet (15) on the back of the dispenser.

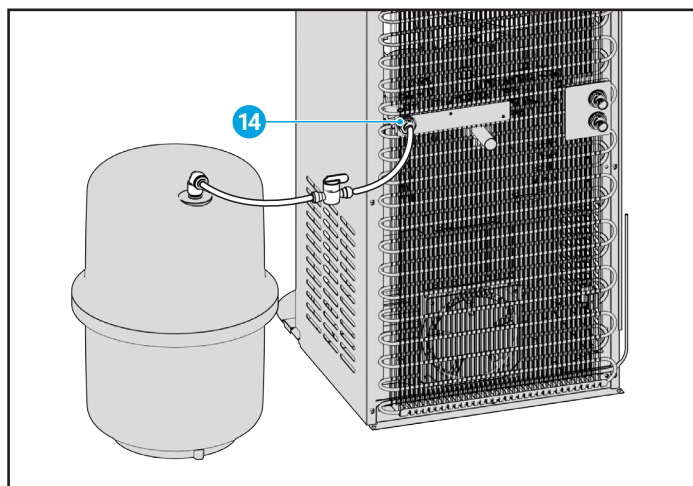
IMPORTANT: Because of gravity-based drainage, the free end of the silicone hose must be routed into a floor drain or drain water receptacle set lower than the hot/cold water tank & drip tray outlet.



Connect External Water Storage Tank (Optional)

To install the external 3-gallon water storage tank (Model no. ACWC7247, purchased separately), follow these steps:

- A. Remove the safety plug from the storage tank port (14) by first pushing in collar on port to release plug before pulling out. Do NOT attempt to pull plug out without first releasing it.
- B. After plug has been removed, insert one end of 1/4" PE tubing (purchased separately) into port. Tug gently to ensure a secure connection.
- C. Connect the other end of the 1/4" tubing to one end of the 2-way valve connector. Connect a second piece of 1/4" PE tubing to the other end of the 2-way valve connector.
- D. Connect 3/8" elbow tank connector to the top of the water storage tank. Insert the free end of the 1/4" PE tubing assembly to the 1/4" port of the elbow tank connector. Gently tug all tubing connections to ensure secure fit. We recommend using locking clips (purchased separately) on all tubing connections.
- E. Rotate handle on 2-way valve to the OPEN position (parallel to tubing).



Operation

IMPORTANT: This unit has been tested and sanitized prior to packing and shipping. During transit, dust and odors can accumulate in the tank and lines. Dispense and dispose at least one quart of water prior to drinking any water.

If you have not already done so, ensure dispenser is connected to water supply, and water supply valves are open. Plug in water dispenser. Allow hot and cold water tanks to fill.

Programming Settings

NOTE: When in Settings mode, the HOT button serves as the "plus" function, and the COLD button serves as the "minus" function. To advance to the next setting, press the UNLOCK button.

Enter Settings Mode

To enter Settings mode, simultaneously press UNLOCK and COLD buttons. The hour flashes.

Adjust the Time

Press HOT or COLD to scroll to the correct hour. Press UNLOCK until minutes begin to flash. Press HOT or COLD to scroll to the correct minutes.

Turn on Cold Water

Press UNLOCK to advance to CS (cold water). Press either HOT or COLD button to turn on cold water. C ON flashes.

Adjust Cold Water Temperature

Press UNLOCK to advance to CS (cold water) temperature setting. The default temperature setting for cold water is 41°F (5°C). To adjust, press HOT or COLD to raise or lower the temperature. Cold water can be adjusted from 41°F (5°C) to 50°F (10°C).

Turn on Hot Water

Press UNLOCK to advance to HS (hot water). Press HOT or COLD to turn on hot water. H ON flashes.

Adjust Hot Water Temperature

Press UNLOCK to advance to HS (hot water) temperature setting. The default hot water temperature is 203°F (95°C). This is the recommended hot water temperature. To adjust, press HOT or COLD to raise or lower the temperature. Hot water temperature can be adjusted from 86°F (30°C) to 203°F (95°C).

Adjust LED Screen Brightness

Press UNLOCK until F1 appears in the time display. The brightness of the LED display can be adjusted to suit your needs. The screen brightness settings are F1 00 (off), F1 01 (20%), F1 02 (40%), F1 03 (60%), F1 04 (80%), and F1 05 (100%). Press HOT or COLD to scroll to the desired brightness.

Turn Off Touchless Dispensing

The touchless dispensing option can be turned off so that water is dispensed by touch only.

Press UNLOCK until F2 ON appears in the time display. Press COLD to change to F2 OF. Touchless dispensing is now off. To turn touchless dispensing back on, press HOT.

Dispense Hot or Cold Water Using Touchless Dispensing

Place container on drip tray under spout. Hover your hand over touchless unlock sensor (35) until you hear a beep. Hover your hand over either the touchless hot water sensor (32) or touchless cold water sensor (37) to dispense. Hold your hand in place until your container has been filled. Remove your hand to end dispensing.

Dispense Hot or Cold Water Using Touch Dispensing

Place container on drip tray under spout. Press the touch unlock button (34) until you hear a beep. Press either the touch hot water button (33) or touch cold water button (36) to dispense water. Release button to end dispensing.

Care and Maintenance

The Brio In-Line UVC Sterilizer is a highly reliable and effective solution for ensuring clean drinking water by using advanced UVC purification technology to reduce up to 99.9% of bacteria and E. coli. Integrated inside the water cooler and positioned between the cold water tank and the dispense spout, the sterilizer activates when dispensing cold water, ensuring the water you drink is purified at the point of use. Featuring an LED light that replaces a traditional mercury lamp or self-cleaning ozone, it offers an impressive ultra-long lifespan and eliminates concerns about mercury leakage or ozone emissions. Designed to last over 5 years, the sterilizer includes an intelligent detection system that automatically switches the UVC light on and off based on water flow, reducing power consumption and extending the light's lifespan.

NOTE: UV Care icon will illuminate when cold water is dispensed.

Regular Maintenance

ALWAYS unplug dispenser before performing any cleaning or maintenance to prevent electrical shock. NEVER immerse dispenser in water or liquids, and do not spray with water.

Around the Spout

Use a slightly damp clean cloth to wipe dirt from around the spout. If the dirt can't be removed, please use an alcohol-based cleaning agent to sterilize.

Water Drip Tray and Grid

Remove drip tray and grid, wash with a neutral detergent, rinse with fresh water, dry with a clean cloth, then reinstall.

Dispenser Body

Use a clean cloth or towel to wipe off any dust or loose dirt. Then use a damp clean cloth or sponge to wipe dispenser off. If dirt can't be removed, make a cleaning solution with a neutral detergent and wipe with that. Dampen a clean cloth with fresh water and wipe off cleaning solution.

Back Panels and Condenser

Vacuum any dust or dirt from the condenser and back panels. Use a damp clean cloth to wipe any remaining dirt off back panels.

Full Unit Draining

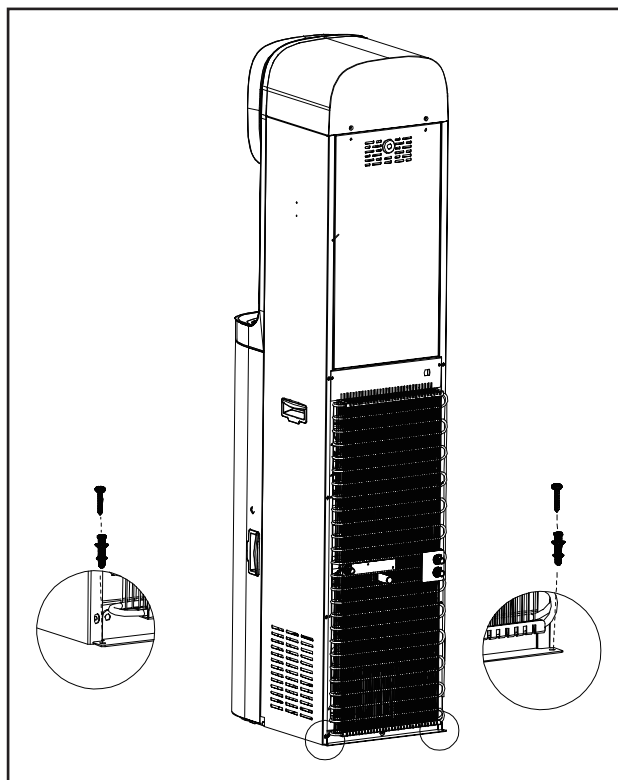
Simultaneously press and hold HOT, COLD, and UNLOCK for 10 seconds. The hot and cold water tanks will begin draining from each spout. To stop draining, press a single button.

Secure Dispenser

Using the provided fixing screws and anchors, follow the below steps to secure the dispenser to the floor:

Description	Fixing Screw and Anchor
Quantity	2

1. Ensure dispenser is positioned at least 6 in. (15 cm) from surrounding walls.
2. Drill pilot holes into the floor using the holes at the back base of the dispenser as guides.
3. Using a rubber mallet, tap one of the fixing anchors into one of the holes until it's fully inserted. Repeated with the other fixing anchor and the other hole.
4. Ensuring screw is at an 90° angle (completely perpendicular), drill it straight into the hole until the screw head sits flush with the anchor head. Repeat process with the other screw.



Filter Replacement Schedule

Filter Type	Model No.	Replacement Schedule	Function
Sediment	NFMPP5M	6–12 months or 3,600 liters	Performs coarse filtration of inlet water, removing sand, rust, dirt, and other suspended solids.
Pre Carbon	NFMGAC	6–12 months or 3,600 liters	Reduces chlorine, and other unpleasant tastes and odors.
Reverse Osmosis (RO)	NFMRO75GPD	6-12 months or 7,200 liters	Removes contaminants including lead, arsenic, fluoride, and TDS.
Post Carbon	NFMCTO5MS4	6–12 months or 3,600 liters	Performs final polish, removing any residual impurities.

Replace the Filters

IMPORTANT: Only replace the filters with new filters designed for this dispenser. Any other type of filter will damage the machine and void any warranty.

When the REPLACE FILTER icon (30) illuminates on the display panel, filters need to be replaced.

To replace, do the following:

1. Shut off the water supply.
2. To flush your new filters, follow the instructions under “Flush the Filters.”
3. Remove the expired filters and replace with new filters. Ensure filters are installed as follows, from left to right: sediment filter, pre carbon filter, RO filter, and post carbon filter.

Filter Specifications

Sediment Filter

(Sediment, Dirt and Rust Removal)

Filter Capacity	3,600 Liters
Flow Rate	3 LPM
Suggested PSI	14.5 - 58 psi
Temperature	33 - 100 °F

Pre Carbon Filter

(Chlorine, Taste and Odor Reduction)

Filter Capacity	3,600 Liters
Flow Rate	3 LPM
Suggested PSI	14.5 - 58 psi
Temperature	33 - 100 °F

RO Filter

(Reduce Impurities to 0.0001 Microns)

Filter Capacity	7,200 Liters
Flow Rate	0.13 LPM
Suggested PSI	58 - 116 psi
Temperature	33 - 100 °F

Post Carbon Filter

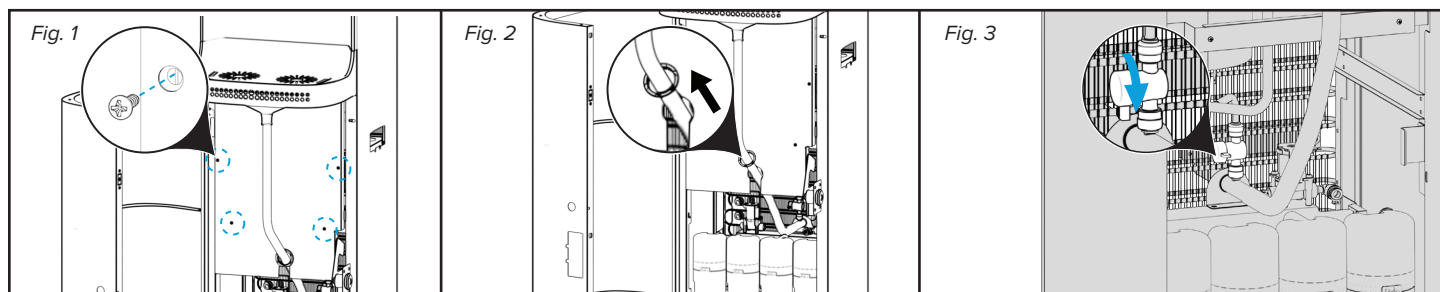
(Final Polish)

Filter Capacity	3,600 Liters
Flow Rate	3 LPM
Suggested PSI	14.5 - 58 psi
Temperature	33 - 100 °F

Draining Internal Water Tanks

If the dispenser needs to be moved or internally serviced, the internal water tanks must be drained first. To do this, follow these steps:

- A. Unplug dispenser and shut off water supply. Allow hot water in hot water tank to cool, approximately 1 to 2 hours.
 - B. If it is not already connected, connect the silicone drip tray hose to the hot/cold water tank & drip tray drain outlet on the back of the dispenser. See "Install the Filters and Connect Tubing" for steps.
- IMPORTANT:** Because of gravity-based drainage, the free end of the hose must be routed into a floor drain or drain water receptacle set lower than the hot/cold water tank & drip tray outlet.
- C. Open the cabinet door of the dispenser. Remove the 4 screws securing the panel located just beneath the drip tray and behind the drip tray drain hose. (Fig. 1) Set screws aside in a safe place.
 - D. Unsnap the circular clip from the base of the drain hose, then slide it up the hose and out of the way. (Fig. 2)
 - E. Carefully remove the panel by maneuvering it from behind the drip tray hose. If necessary, pull drip tray hose to one side to facilitate panel removal. Set panel aside.
 - F. Following the drip tray drain hose into the cabinet, locate the valve that connects the water tanks to the drain hose. Rotate the valve handle DOWN. (Fig. 3) The hot/cold water tank drain valve is now OPEN. Water will begin draining from the water tanks, out of the dispenser and down through the silicone hose.
 - G. After tanks have emptied, rotate the valve handle upward until it's perpendicular to the valve. The valve is now CLOSED.
 - H. Reinstall the front panel, snap the circular clip back in place at the base of the drain hose, and close the cabinet door.



Troubleshooting

Please consult the following table before requesting technical assistance.

Problem	Probable cause	Solution
No power	• Dispenser not connected to power source	• Check whether power cable is plugged in properly
	• Built-in wires are loose	• Schedule for inspection by professional technician
Dispenser will not dispense water when buttons are pressed	• Dispenser in safety lock mode	• Check if the safety lock indicator is illuminated and unlock
	• Circuit malfunctioning	• Schedule for inspection by professional technician
No water or low water flow	• Water pump disorder	• Schedule for inspection by professional technician
Cold water is too warm/hot water is too cool	• Dispenser is unplugged (heating and cooling indicators are dimmed)	• Plug in the dispenser
	• Cooling and heating indicator flash, indicating water is still cooling and heating	• Wait for the cooling and heating to finish. When optimal temperatures are reached, indicators will be steadily illuminated
	• Circuit malfunction	• Schedule for inspection by professional technician
	• Voltage malfunction	• Schedule for inspection by professional technician
Water leakage* *Unplug dispenser if there is a leak	• Check the internal pipeline connections of the dispenser	• Schedule inspection by professional technician
Button infrared sensing malfunction	• Infrared function is not enabled	• Enter setting mode to enable the infrared function. F2-ON means the infrared function is on. F2-OFF means the infrared function is off

Error Codes

Problem	Probable Cause	Solution
E00	The heating NTC is faulty	When the heating NTC is open or has short circuited, the heating stops working and the screen displays E00. The dispenser can still dispense water. Turn off/unplug dispenser and rectify the fault before restoring power.
E01	Abnormal water replenishment	When the water level floats in the cold water tank can't detect water for 5S despite 75 minutes of water replenishment, the screen displays code E01. The dispenser can still dispense water. Turn off/unplug dispenser and rectify the fault before restoring power.
E02	The cooling NTC is faulty	When the cooling NTC is open or has short circuited, the cooling stops working and the screen displays E02. The dispenser can still dispense water. Turn off/unplug dispenser and rectify the fault before restoring power.
E03	UV lamp needs replacement	When the UV lamp experiences diminished intensity and can no longer effectively sanitize the cold water tank, the screen displays E03 and the UV Care icon flashes. After UV lamp replacement, simultaneously press hot and cold water buttons for 30 seconds or until a beep sounds. The UV lamp timer has now been successfully reset.
E04	Low water pressure fault	When the low water pressure switch senses a drop in water pressure, the screen displays E04. The dispenser can still dispense water. Turn off/unplug dispenser and rectify the fault before restoring power.
E05	Water leakage fault	When the water level has reached the leak level detector for 10S, the dispenser stops running and the screen displays E05. Turn off/unplug dispenser and rectify the fault before restoring power.

Warranty

Lago ("Vendor") warrants to the original purchaser of the Lago Water Cooler (the "Product"), and to no other person, that if the Product is assembled and operated in accordance with the printed instructions accompanying it, then for a period of one (1) year from the date of purchase, all parts in the Product shall be free from defects in material and workmanship. This Limited Warranty shall be limited to repair or replacement of parts, which prove defective under normal use and service and which Vendor shall determine in its reasonable discretion upon examination to be defective. To take advantage of this Limited Warranty, please follow these steps:

1. Please retain your sales slip or invoice, as Vendor may require reasonable proof of your date of purchase.
2. Contact Vendor's Customer Service Department using the contact information listed below.
3. Return parts to Vendor, per Vendor's instructions, at your cost and expense.
4. Upon receipt by Vendor, Vendor shall advise you in writing whether a defect covered by this Limited Warranty exists in any returned part and whether your claim has been approved or denied.
5. Upon Vendor's approval of your claim, Vendor will replace such defective part without charge to you.

WHAT THIS LIMITED WARRANTY DOES NOT COVER: This Limited Warranty does not cover any failures or operating difficulties of the Product due to accident, abuse, misuse, alteration, misapplication, improper installation or improper maintenance or service by you or any third party, or failure to perform normal and routine maintenance on the Product, as set out in the User's Manual. In addition, this Limited Warranty does not cover damages to the finish, such as scratches, dents, discoloration or rust after purchase.

This Limited Warranty is the only express warranty given on the Product and is in lieu of all other express warranties. Vendor disclaims all warranties for products that are purchased from seller other than authorized retailers or distributors. THIS LIMITED WARRANTY RESTRICTS THE DURATION OF ANY AND ALL IMPLIED WARRANTIES, INCLUDING WITHOUT LIMITATION, THE IMPLIED WARRANTY OF MERCHANTABILITY AND FITNESS FOR A PARTICULAR PURPOSE TO THE ONE (1) YEAR TERM OF THIS LIMITED WARRANTY. UPON THE EXPIRATION OF THE ONE (1) YEAR TERM OF THIS LIMITED WARRANTY, VENDOR DISCLAIMS ANY AND ALL IMPLIED WARRANTIES, INCLUDING WITHOUT LIMITATION THE IMPLIED WARRANTIES OF MERCHANTABILITY AND FITNESS FOR A PARTICULAR PURPOSE, THE PRODUCT BEING THUS SOLD AS-IS, WITH ALL FAULTS. FURTHER, VENDOR SHALL HAVE NO LIABILITY WHATSOEVER TO PURCHASER OR ANY THIRD PARTY FOR ANY SPECIAL, INDIRECT, PUNITIVE, INCIDENTAL, OR CONSEQUENTIAL DAMAGES. OTHER THAN THIS LIMITED WARRANTY, THERE ARE NO WARRANTIES WHICH EXTEND BEYOND THE DESCRIPTION ON THE FACE HEREOF. Vendor assumes no responsibility for any defects caused by third parties. This Limited Warranty gives you specific legal rights, and you may have other rights which vary from state to state. State law may also override statements in this Limited Warranty regarding the restriction on the duration of implied warranties. Some jurisdictions do not allow exclusion or limitation of special, incidental or consequential damages, or limitations on how long a warranty lasts, so the above exclusion and limitations may not apply to you.

lago®